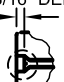
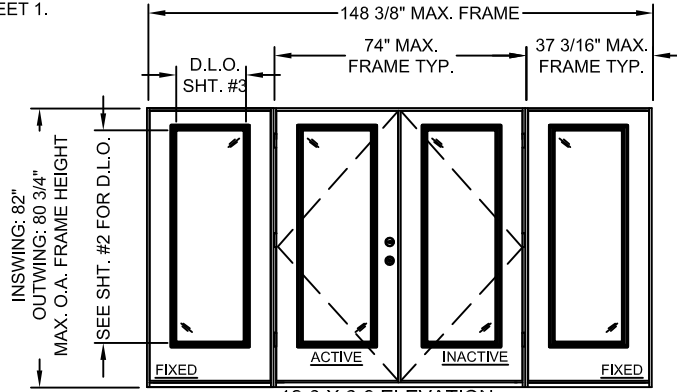


**JELD-WEN DOOR SYSTEM  
INSTALLATION DETAILS  
STEEL 24 GA. WOOD EDGE  
GLAZED DOOR WITH GLAZED SIDELITES  
UP TO 12'-0" X 6'-8"  
OUTSWING/INSWING**

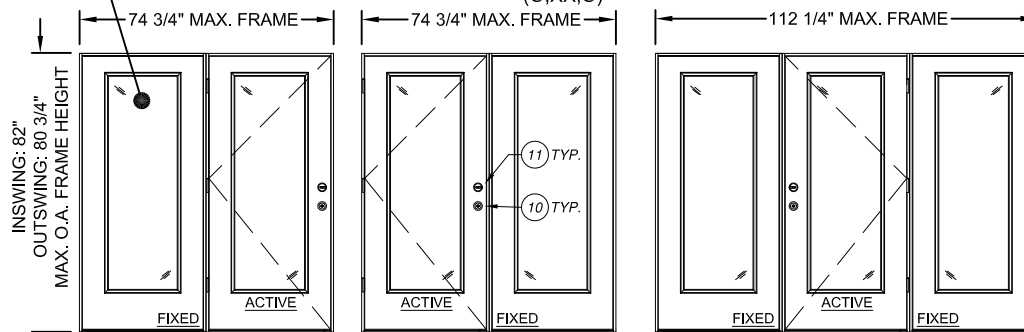
**GENERAL NOTES**

- THIS PRODUCT IS DESIGNED TO COMPLY WITH CURRENT INTERNATIONAL BUILDING CODE (I.B.C.) & INTERNATIONAL RESIDENTIAL CODE (I.R.C.) AND THE CURRENT FLORIDA BUILDING CODES (FBC). PRODUCT HAS BEEN TESTED TO TAS 201-94, TAS 202-94 AND TAS 203-94. PRODUCT ALSO MEETS "HIGH VELOCITY HURRICANE ZONE" (HVHZ) REQUIREMENTS.
- 1X AND 2X WOOD BUCKS BY OTHERS, MUST BE ANCHORED PROPERLY TO TRANSFER LOADS TO THE STRUCTURE. BUCK MATERIAL MUST HAVE A SPECIFIC GRAVITY OF 0.55 OR GREATER.
- PRODUCT ANCHOR TYPES AND SPACING ARE SHOWN ON SHEET 5. DIMENSIONS SHOWN FOR ANCHOR SPACING ARE ALWAYS FROM EDGE OF UNIT FRAME. ANCHOR EMBEDMENT TO BASE MATERIAL SHALL BE BEYOND WALL DRESSING OR STUCCO.
- THIS DOCUMENT SUPERCEDES OTHER ANCHOR INSTALLATION INSTRUCTIONS FOR IMPACT RATED DOORS. FOR OTHER IMPORTANT INSTALLATION INSTRUCTIONS, REFER TO JELD-WEN DOCUMENT #J1106 (INSTALLATION INSTRUCTIONS FOR PRE-HUNG ENTRY DOORS) FOUND ON THE JELD-WEN WEBSITE: [JELD-WEN.COM/LEARN/RESOURCES/INSTALLATION & FINISHING/](http://JELD-WEN.COM/LEARN/RESOURCES/INSTALLATION&FINISHING/).
- FOR DESIGN PRESSURE RATINGS, SEE TABLE 1, SHEET 1.
- ALL FASTENERS IN WOOD SHALL BE COUNTERSUNK 3/16" DEEP.  
EXAMPLE: 
- DOOR CORE BY JELD-WEN.
- FACE SHEETS:** 24 GA (0.021" MIN) THICKNESS. GALVANIZED STEEL WITH AVERAGE MINIMUM YIELD STRENGTH FY(AVE)=40.3 KSI.



12-0 X 6-8 ELEVATION  
DOUBLE DOOR W/ FULL BACK-TO-BACK 3-0 SIDELITES  
(O,XX,O)

IMPACT LITE TYP.  
SEE SHT. #3



6-0 X 6-8 ELEVATION  
DOUBLE (O,X)

6-0 X 6-8 ELEVATION  
DOUBLE (X,O)

9-0 X 6-8 ELEVATION  
TRIPLE (O,X,O)

SHEET INDEX	
SHEET #	DESCRIPTION
1	GENERAL NOTES, B.O.M. & ELEVATIONS
2	GENERAL NOTES & ELEVATIONS
3	OUTSWING/INSWING BOX MULLION DETAILS
4	OUTSWING VERTICAL AND HORIZONTAL SECTIONS IN WOOD
5	OUTSWING VERTICAL AND HORIZONTAL SECTIONS IN CONCRETE/MASONRY

SHEET #	DESCRIPTION
6	INSWING VERTICAL AND HORIZONTAL SECTIONS IN WOOD
7	INSWING VERTICAL AND HORIZONTAL SECTIONS IN CONCRETE/MASONRY
8	OUTSWING AND INSWING ANCHORING DETAILS
9	TUBE MULLION ANCHORING DETAILS

**TABLE 1**

DESIGN PRESSURE RATING:			
SIZE	QUALIFIES: IMPACT GLAZED OPERABLE PANELS AND SIDELITES		
MAX. PANEL WIDTH = 35 3/4"	6-8 TALL SYSTEMS:		
	(XXO) (OXXO) (OX) (XO) (OXO)		
MULLION TYPE	LVL BACK TO BACK MULLION	FJP OR SOLID PINE BACK TO BACK MULLION	1X4 ALUM. TUBE MULLION
OUTSWING	POSITIVE + 65*	+ 50*	+ 65*
	NEGATIVE - 60*	- 50*	- 60*
INSWING	POSITIVE + 60*	+ 50*	+ 60*
	NEGATIVE - 65*	- 50*	- 65*

**COMPONENT LIST**

ITEM	DESCRIPTION	MATERIAL	QTY.
1	NON-COMPRESSION SHIM (0.25" MAX. THK.)	WOOD	AS REQ.
2	2x WOOD SUB BUCK (S.G. MUST BE 0.55 OR GREATER)	WOOD	AS REQ.
3	1X WOOD SUB BUCK (S.G. MUST BE 0.55 OR GREATER)	WOOD	AS REQ.
4	#10 WOOD INSTALLATION SCREW W/ 1 1/2" MIN. EMBEDMENT	STEEL	AS REQ.
5	1/4" ITW TAPCON W/ MIN. 1 1/4" MIN. EMBEDMENT	STEEL	AS REQ.
6	#9 X 2 1/2" PHILLIPS FLATHEAD WOOD SCREW	STEEL	2 OR 4
7	#8 X 2" PHILLIPS FLATHEAD WOOD SCREW	STEEL	AS REQ.
8	#9 X 3/4" PHILLIPS FLATHEAD WOOD SCREW	STEEL	30 OR 60
9	1" O.A. IG IMPACT FRAME GLAZED BY ODL	ALUMINUM	1 OR 2
10	KWIKSET LOCK SERIES 400	STEEL	1
11	KWIKSET DEADBOLT SERIES 780	STEEL	1
12	ODL FLAT LITE KIT OPTION	STEEL	1
13	ADA THRESHOLD	ALUMINUM	1

\* NOTE(s):

- INSWING PRODUCT MEETS WATER INFILTRATION REQUIREMENTS ASTM E331-00 @ 0 PSF.
- OUTSWING PRODUCT WITH AFCO H-497 THRESHOLDS MEETS WATER INFILTRATION REQUIREMENTS ASTM E331-00 @ 9 PSF.
- OUTSWING PRODUCT WITH ENDURA FOB4566A THRESHOLDS MEETS WATER INFILTRATION REQUIREMENTS ASTM E331-00 @ 8.25 PSF.
- ALL OTHER THRESHOLD RATED FOR 0 PSF.

**JELD-WEN**  
WINDOWS & DOORS  
3737 Lakeport Blvd.  
Klamath Falls, OR 97601  
Phone: (541) 882-3451  
Fax: (541) 850-2609

STEEL WOOD EDGE 12-0 X 6-8 FULL LITE  
INSWING/OUTSWING IMPACT GLAZING  
PART OR ASSEMBLY  
GENERAL NOTES, ELEVATIONS, DP RATINGS  
AND B.O.M.

HERMESA F. NORERO  
LICENSED PROFESSIONAL ENGINEER  
No. 73778  
STATE OF FLORIDA  
FLORIDA P.E. NO. 73778  
398 E. DANIA BEACH BLVD. #338  
DANIA BEACH, FL 33004  
FBPE CERT. OF AUTH. NO. 29578

DATE: 12.15.2015  
SCALE: NONE  
DWG. BY: G.LUBBECKE  
CHK. BY: S.SAFFELL  
DRAWING No.: D013701  
SHEET 1 OF 9

**JELD-WEN DOOR SYSTEM  
INSTALLATION DETAILS  
STEEL 24 GA. WOOD EDGE  
GLAZED DOOR WITH GLAZED SIDELITES  
UP TO 12'-0" X 8'-0"  
OUTSWING/INSWING**

**GENERAL NOTES**


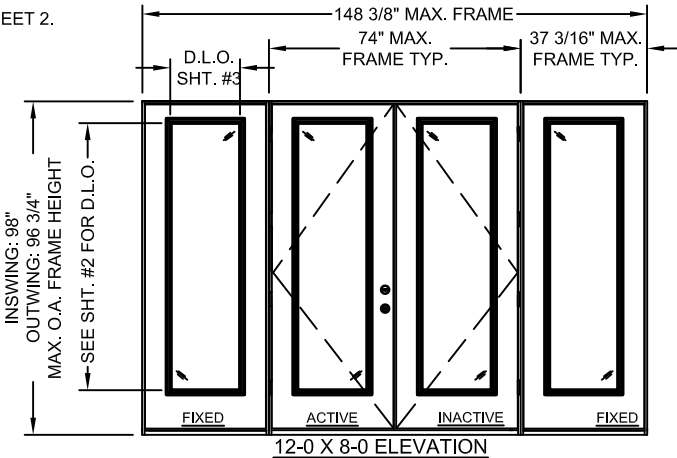
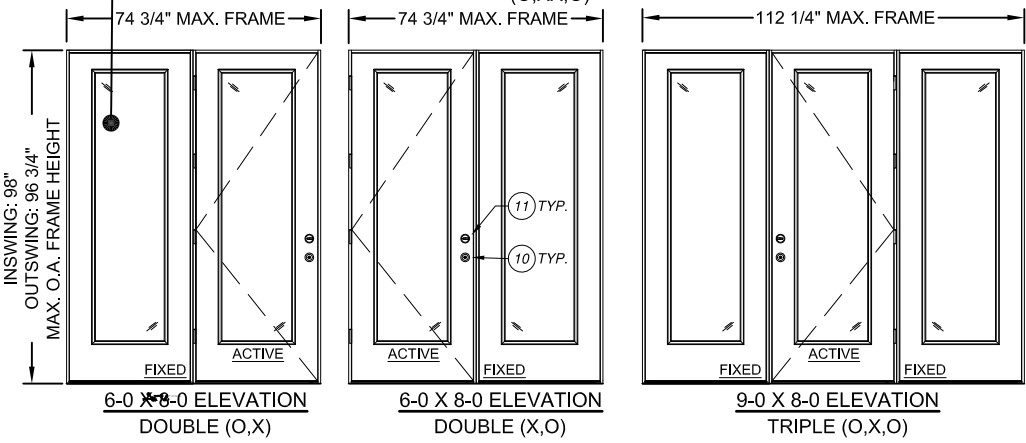
- THIS PRODUCT IS DESIGNED TO COMPLY WITH CURRENT INTERNATIONAL BUILDING CODE (I.B.C.) & INTERNATIONAL RESIDENTIAL CODE (I.R.C.) AND THE CURRENT FLORIDA BUILDING CODES (FBC). PRODUCT HAS BEEN TESTED TO TAS 201-94, TAS 202-94 AND TAS 203-94. PRODUCT ALSO MEETS "HIGH VELOCITY HURRICANE ZONE" (HVHZ) REQUIREMENTS.
- 1X AND 2X WOOD BUCKS BY OTHERS, MUST BE ANCHORED PROPERLY TO TRANSFER LOADS TO THE STRUCTURE. BUCK MATERIAL MUST HAVE A SPECIFIC GRAVITY OF 0.55 OR GREATER.
- PRODUCT ANCHOR TYPES AND SPACING ARE SHOWN ON SHEET 5. DIMENSIONS SHOWN FOR ANCHOR SPACING ARE ALWAYS FROM EDGE OF UNIT FRAME. ANCHOR EMBEDMENT TO BASE MATERIAL SHALL BE BEYOND WALL DRESSING OR STUCCO.
- THIS DOCUMENT SUPERCEDES OTHER ANCHOR INSTALLATION INSTRUCTIONS FOR IMPACT RATED DOORS. FOR OTHER IMPORTANT INSTALLATION INSTRUCTIONS, REFER TO JELD-WEN DOCUMENT #JII106 (INSTALLATION INSTRUCTIONS FOR PRE-HUNG ENTRY DOORS) FOUND ON THE JELD-WEN WEBSITE: [JELD-WEN.COM/LEARN/RESOURCES/INSTALLATION & FINISHING/](http://JELD-WEN.COM/LEARN/RESOURCES/INSTALLATION&FINISHING/).
- FOR DESIGN PRESSURE RATINGS, SEE TABLE 1, SHEET 2.
- ALL FASTENERS IN WOOD SHALL BE COUNTERSUNK 3/16" DEEP.  
EXAMPLE: 
- DOOR CORE BY JELD-WEN.
- FACE SHEETS:** 24 GA (0.021" MIN) THICKNESS. GALVANIZED STEEL WITH AVERAGE MINIMUM YIELD STRENGTH FY(AVE)=40.3 KSI.

TABLE 1			
DESIGN PRESSURE RATING:			
SIZE	QUALIFIES: IMPACT GLAZED OPERABLE PANELS AND SIDELITES		
MAX. PANEL WIDTH = 35 3/4"	8-0 TALL SYSTEMS:		
	(XXO) (OXXO) (OX) (XO) (OXO)		
MULLION TYPE	LVL BACK TO BACK MULLION	FJP OR SOLID PINE BACK TO BACK MULLION	1X4 ALUM. TUBE MULLION
OUTSWING	POSITIVE + 50*	+ 50*	+ 35*
	NEGATIVE - 50*	- 50*	- 35*
INSWING	POSITIVE + 50*	+ 50*	+ 35*
	NEGATIVE - 50*	- 50*	- 35*

- \* NOTE(s):
- INSWING PRODUCT MEETS WATER INFILTRATION REQUIREMENTS ASTM E331-00 @ 0 PSF.
  - OUTSWING PRODUCT WITH AFCO H-497 THRESHOLDS MEETS WATER INFILTRATION REQUIREMENTS ASTM E331-00 @ 9 PSF.
  - OUTSWING PRODUCT WITH ENDURA FOB4566A THRESHOLDS MEETS WATER INFILTRATION REQUIREMENTS ASTM E331-00 @ 8.25 PSF.
  - ALL OTHER THRESHOLD RATED FOR 0 PSF.



IMPACT LITE TYP.  
SEE SHT. #3



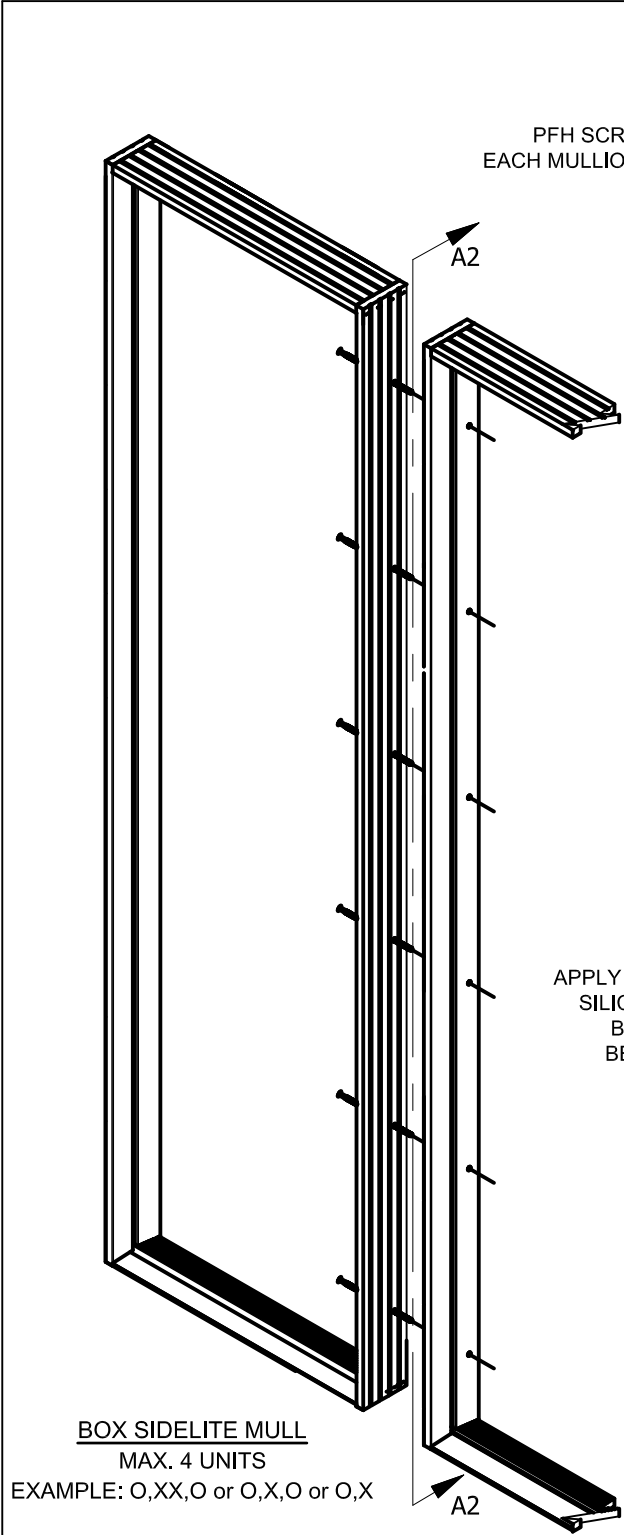
**JELD WEN**  
WINDOWS & DOORS  
3737 Lakeport Blvd.  
Klamath Falls, OR 97601  
Phone: (541) 882-3451  
Fax: (541) 850-2609

STEEL WOOD EDGE 12-0 X 8-0 FULL LITE  
INSWING/OUTSWING IMPACT GLAZING  
PART OR ASSEMBLY  
GENERAL NOTES, ELEVATIONS, DP RATINGS

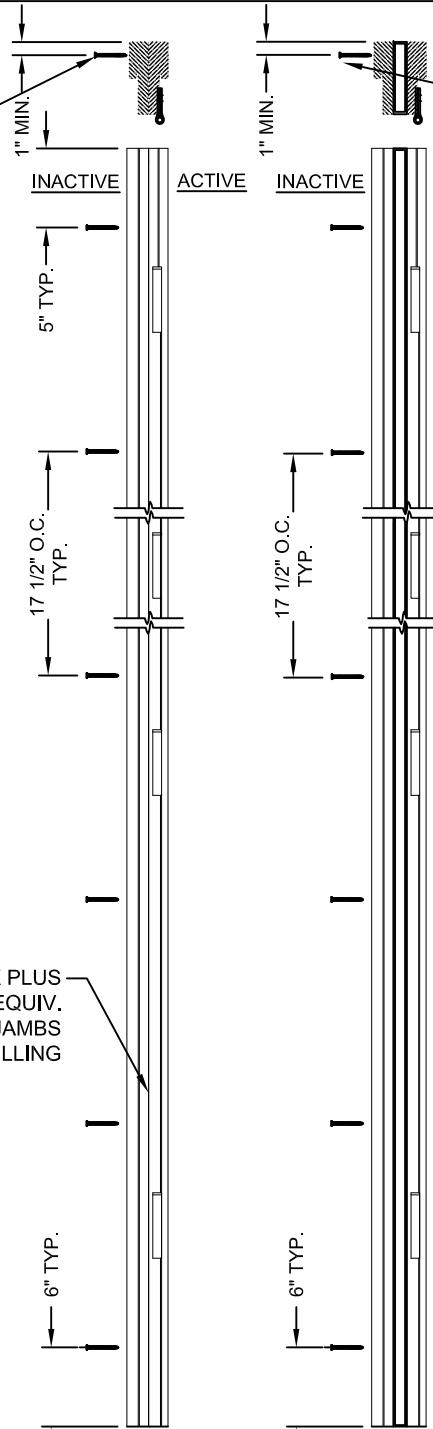
HERMESA F. NORERO  
LICENSE  
No. 73778  
STATE OF FLORIDA  
PROFESSIONAL ENGINEER  
HERMESA F. NORERO  
FLORIDA P.E. NO. 73778  
398 E. DANIA BEACH BLVD. #338  
DANIA BEACH, FL 33004  
FBPE CERT. OF AUTH. NO. 29578

DATE: 12.15.2015  
SCALE: NONE  
DWG. BY: G.LUBBECKE  
CHK. BY: S.SAFFELL  
DRAWING No.: D013701  
SHEET 2 OF 9

NO.	DATE	REVISIONS	BY
1	01/27/20	ADA THRESHOLD ADDED	TB

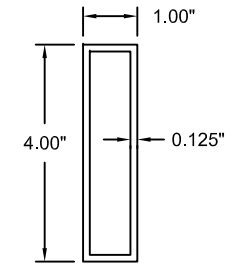


#8 X 2" PFH SCREW AT EACH MULLION TYP.

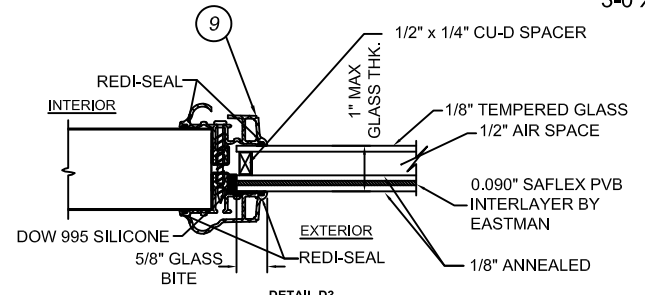


**DETAIL A3**  
FASTENER LOCATIONS AT DOUBLE-BACK JAMB ATTACHMENT

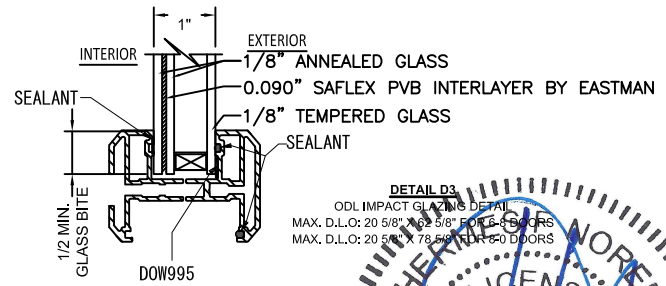
**DETAIL B3**  
FASTENER LOCATIONS AT 1" X 4" MULLION



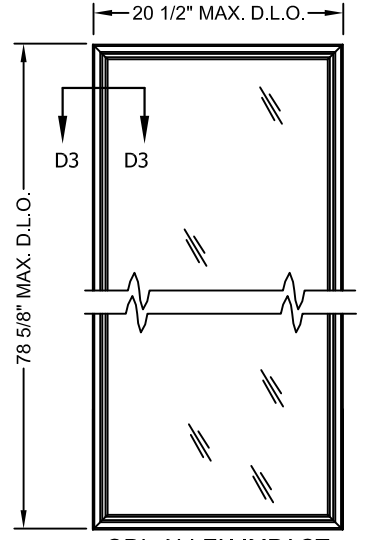
**DETAIL C3**  
1" X 4" MULLION  
6063-T6 ALUM.



**DETAIL D3**  
ODL IMPACT GLAZING DETAIL  
MAX. D.L.O.: 20 1/2" X 78 5/8" FOR 8-0 DOORS  
MAX. D.L.O.: 20 1/2" X 62 1/2" FOR 6-8 DOORS



**DETAIL D3**  
ODL IMPACT GLAZING DETAIL  
MAX. D.L.O.: 20 5/8" X 62 5/8" FOR 8-0 DOORS  
MAX. D.L.O.: 20 5/8" X 78 5/8" FOR 6-8 DOORS



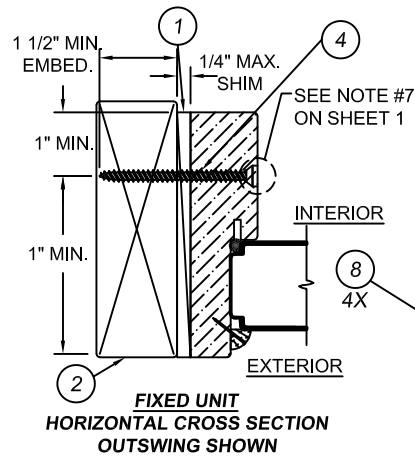
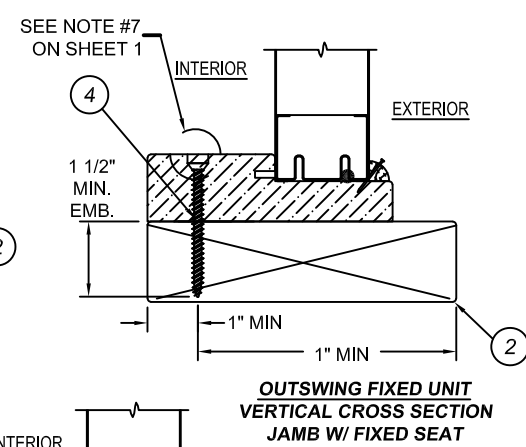
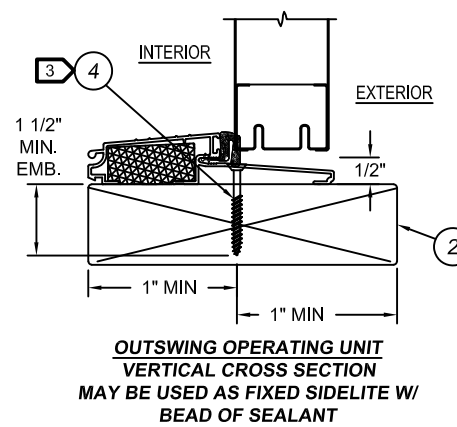
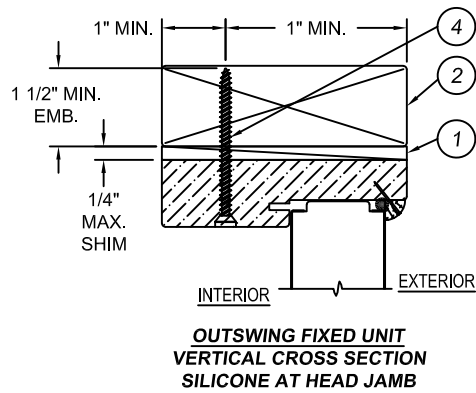
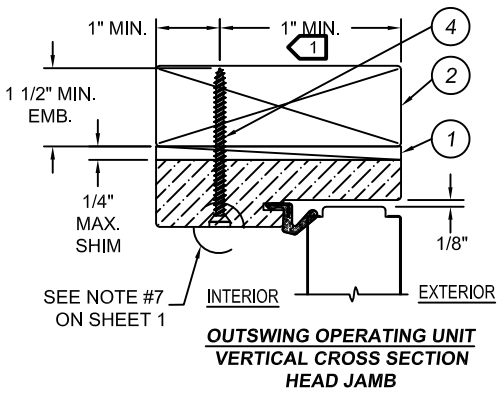
**ODL ALLEN IMPACT**  
3-0 X 6-8 SHOWN

**JELD-WEN**  
WINDOWS & DOORS  
3737 Lakeport Blvd.  
Klamath Falls, OR 97601  
Phone: (541) 882-3451  
Fax: (541) 850-2609

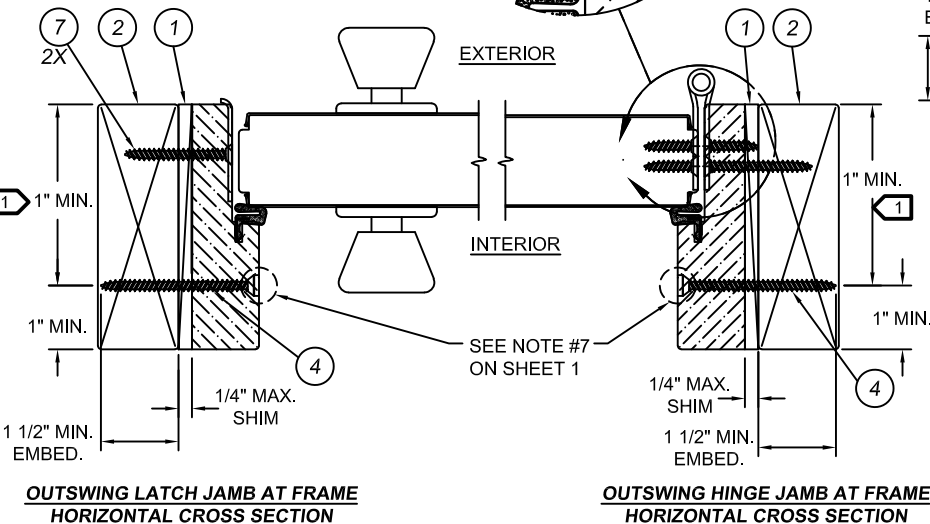
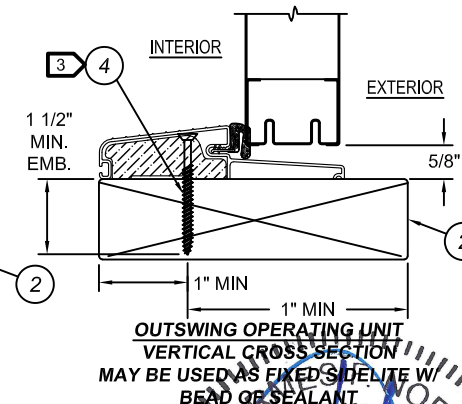
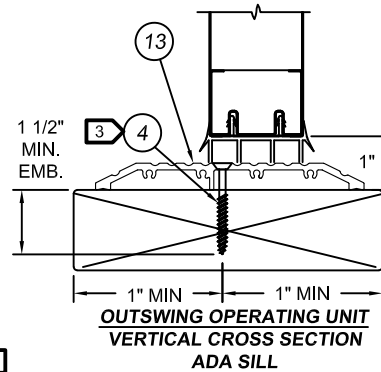
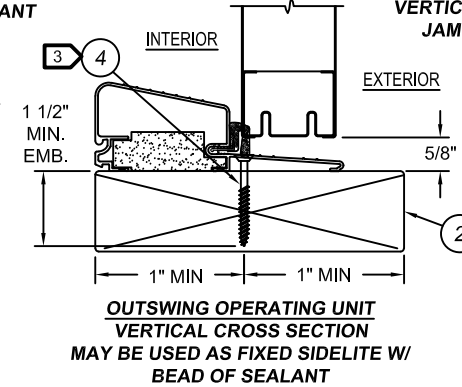
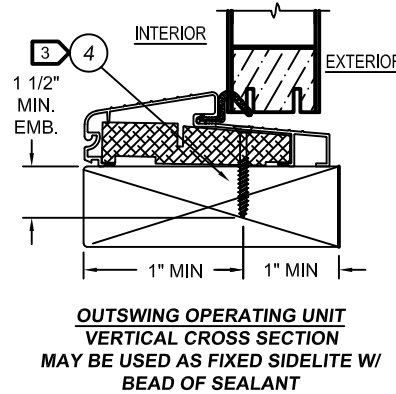
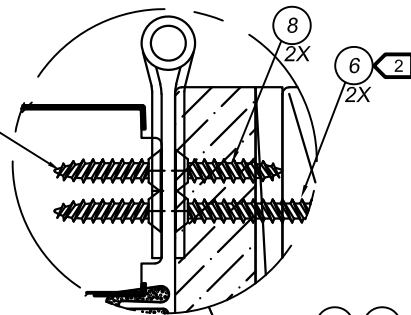
PRODUCTION  
STEEL WOOD EDGE 12-0 X 8-0 FULL LITE  
INSWING/OUTSWING IMPACT GLAZING  
PART OR ASSEMBLY  
MULLING DETAILS AND GLAZING OPTIONS

HERMES F. NORERO  
FLORIDA P.E. NO. 73778  
398 E. DANIA BEACH BLVD., #398  
DANIA BEACH, FL 33004  
FBPE CERT. OF AUTH. NO. 29578

DATE: 12.15.2015  
SCALE: NONE  
DRAWN BY: G.LUBBECKE  
CHECK BY: S.SAFFELL  
DRAWING No.: D013701  
SHEET 3 OF 9



**HINGE DETAIL:**  
 TOP = 6 SCREWS (ITEM #8), 2 SCREWS (ITEM #6)  
 CENTER TOP = 8 SCREWS (ITEM #8)  
 CENTER BOTTOM = 8 SCREWS (ITEM #8)  
 BOTTOM = 8 SCREWS (ITEM #8)



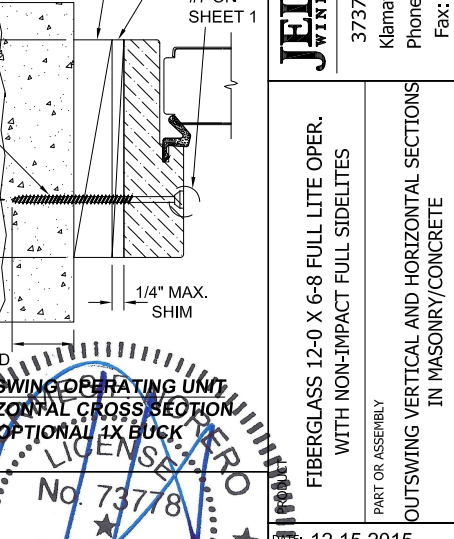
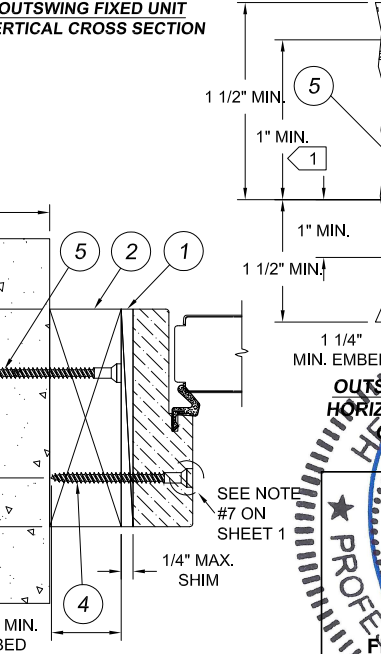
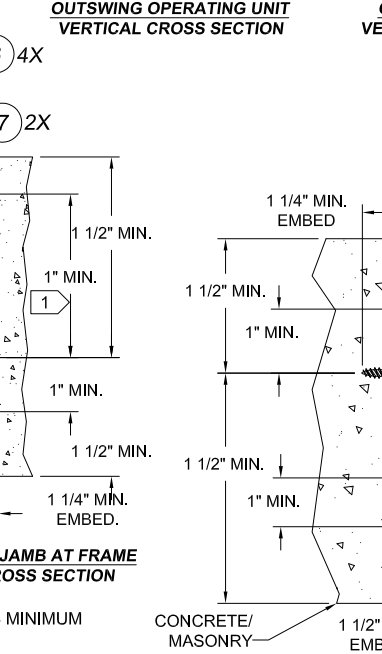
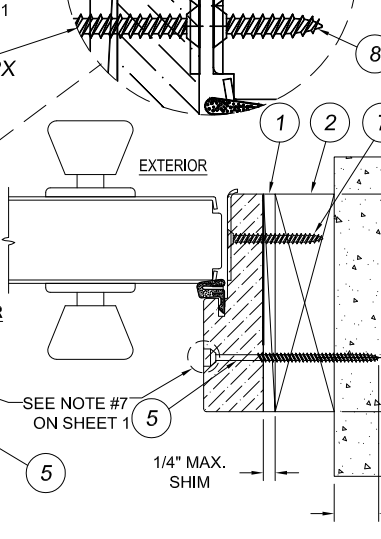
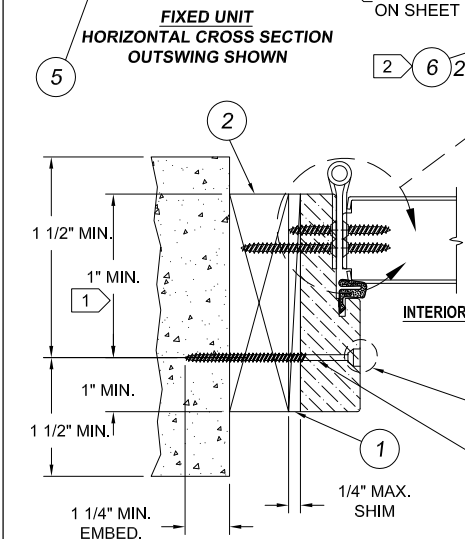
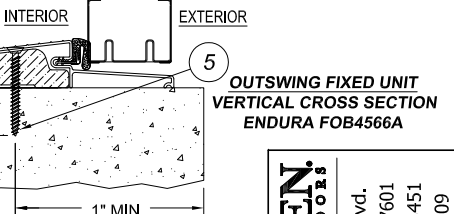
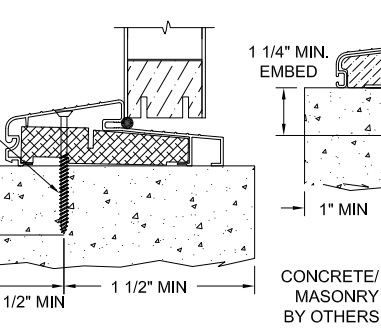
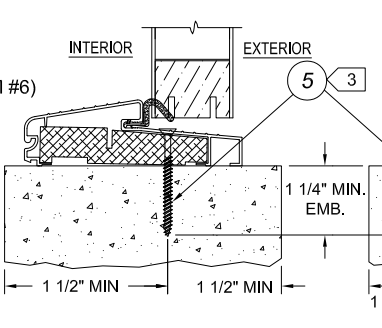
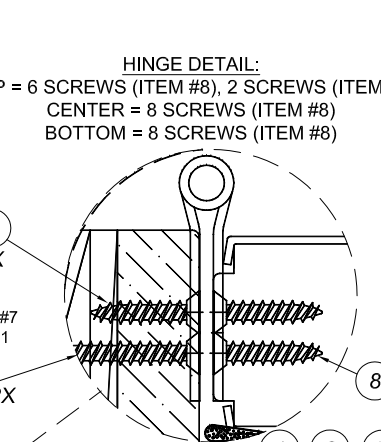
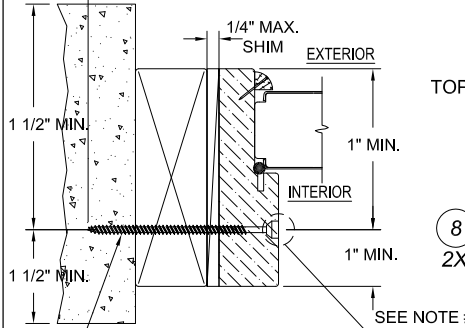
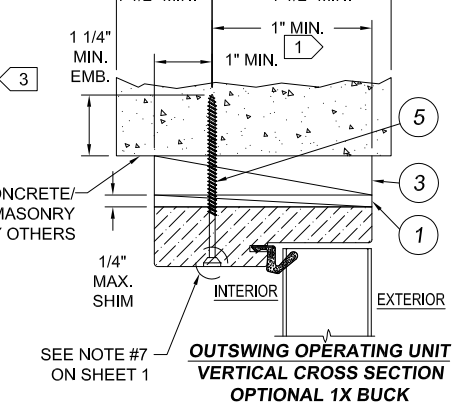
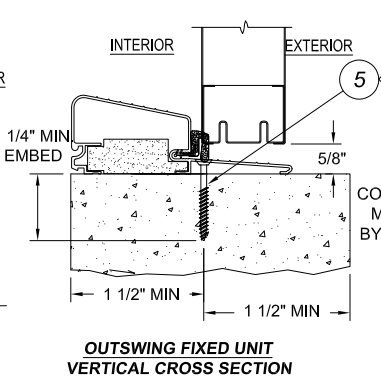
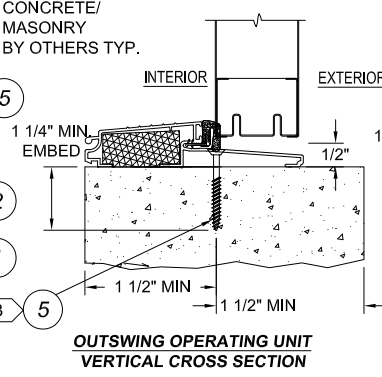
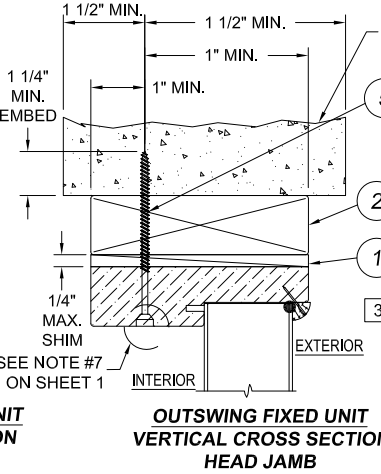
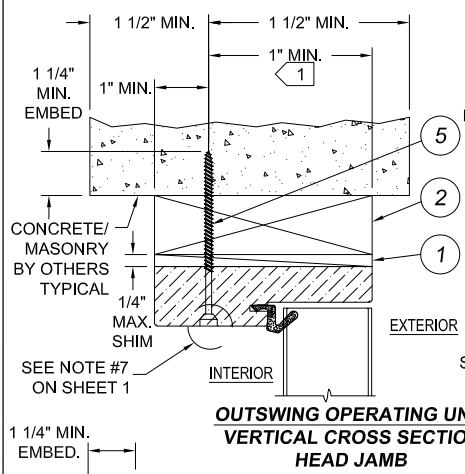
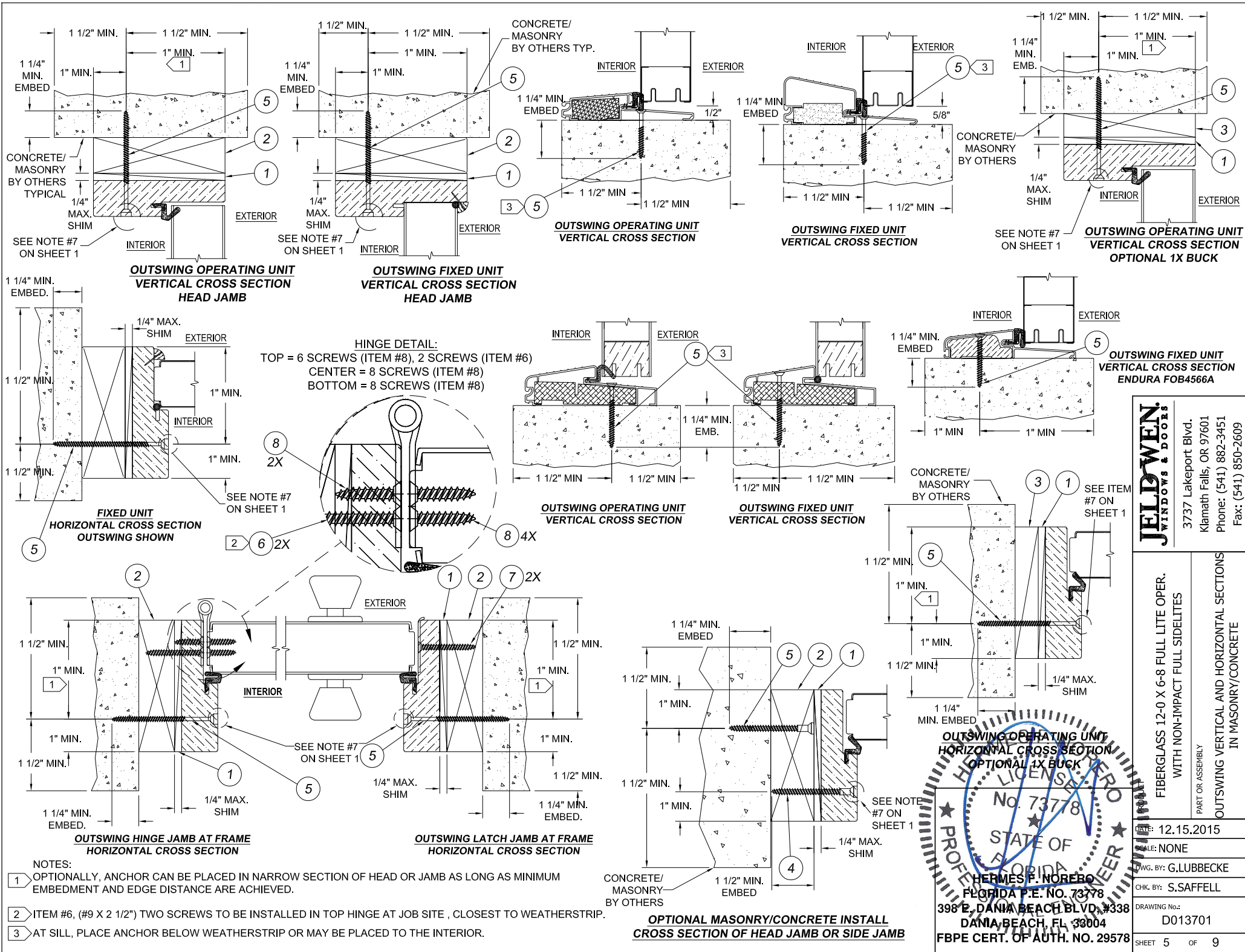
- NOTES:
- 1 OPTIONALLY, ANCHOR CAN BE PLACED IN NARROW SECTION OF HEAD OR JAMB AS LONG AS MINIMUM EMBEDMENT AND EDGE DISTANCE ARE ACHIEVED.
  - 2 ITEM #6, (#9 X 2 1/2") TWO SCREWS TO BE INSTALLED IN TOP HINGE AT JOB SITE, CLOSEST TO WEATHERSTRIP.
  - 3 AT SILL, PLACE ANCHOR BELOW WEATHERSTRIP OR MAYBE PLACED TO THE INTERIOR.

HERMES F. NOERO  
 LICENSE NO. 73778  
 STATE OF FLORIDA  
 398 E. DANIA BEACH BLVD, #338  
 DANIA BEACH, FL 33004  
 FBPE CERT. OF AUTH. NO. 29578

**JELD-WEN**  
 WINDOWS & DOORS  
 3737 Lakeport Blvd.  
 Klamath Falls, OR 97601  
 Phone: (541) 882-3451  
 Fax: (541) 850-2609

STEEL WOOD EDGE 12-0 X 8-0 FULL LITE  
 INSWING/OUTSWING IMPACT GLAZING  
 PART OR ASSEMBLY  
 OUTSWING VERTICAL AND HORIZONTAL SECTIONS  
 IN WOOD

DATE: 12.15.2015  
 SCALE: NONE  
 DES. BY: G.LUBBECKE  
 CHK. BY: S.SAFFELL  
 DRAWING NO.: D013701  
 SHEET 4 OF 9



- NOTES:**
- 1 OPTIONALLY, ANCHOR CAN BE PLACED IN NARROW SECTION OF HEAD OR JAMB AS LONG AS MINIMUM EMBEDMENT AND EDGE DISTANCE ARE ACHIEVED.
  - 2 ITEM #6, (#9 X 2 1/2") TWO SCREWS TO BE INSTALLED IN TOP HINGE AT JOB SITE, CLOSEST TO WEATHERSTRIP.
  - 3 AT SILL, PLACE ANCHOR BELOW WEATHERSTRIP OR MAY BE PLACED TO THE INTERIOR.

**JELLDWEN WINDOWS & DOORS**  
 3737 Lakeport Blvd.  
 Klamath Falls, OR 97601  
 Phone: (541) 882-3451  
 Fax: (541) 850-2609

FIBERGLASS 12-0 X 6-8 FULL LITE OPER. WITH NON-IMPACT FULL SIDELITES

PART OR ASSEMBLY

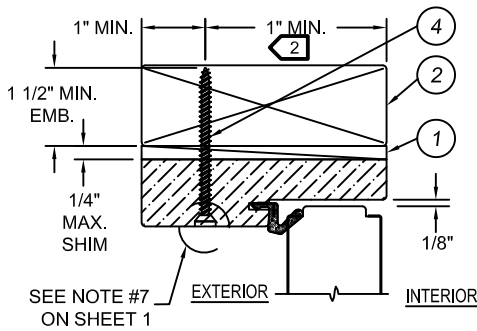
OUTSWING VERTICAL AND HORIZONTAL SECTIONS IN MASONRY/CONCRETE

DATE: 12.15.2015  
 SCALE: NONE  
 DWG. BY: G.LUBBECKE  
 CHK. BY: S.SAFFELL  
 DRAWING No.: D013701

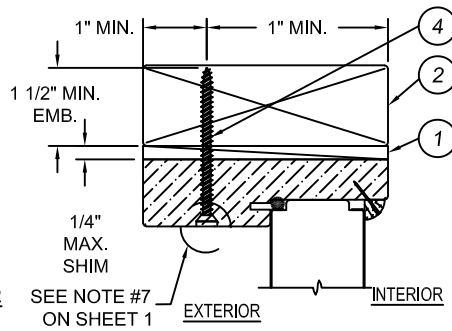
HERMES F. NOBORO  
 FLORIDA P.E. NO. 73778  
 398 E. DANIA BEACH BLVD., #338  
 DANIA BEACH, FL 33004  
 FBPE CERT. OF AUTH. NO. 29578

STATE OF FLORIDA  
 PROFESSIONAL ENGINEER  
 No. 73778

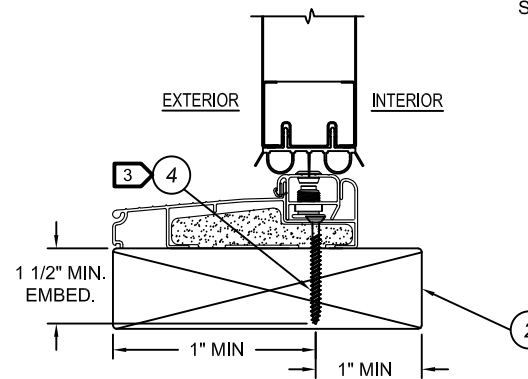
SHEET 5 OF 9



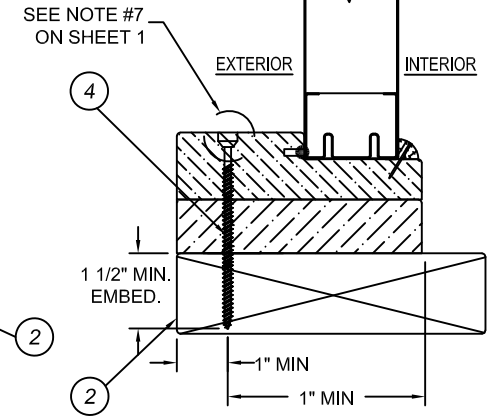
**INSWING OPERATING UNIT  
VERTICAL CROSS SECTION  
HEAD JAMB**



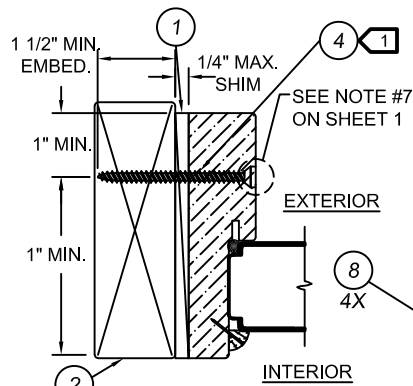
**INSWING FIXED UNIT  
VERTICAL CROSS SECTION  
HEAD JAMB**



**INSWING OPERATING UNIT  
VERTICAL CROSS SECTION**

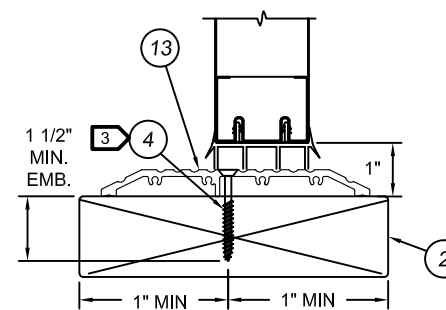
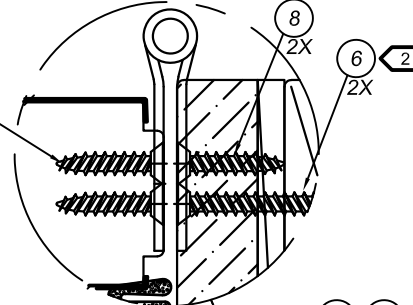


**INSWING STATIONARY UNIT  
VERTICAL CROSS SECTION  
BOXED SIDELITE SILL**

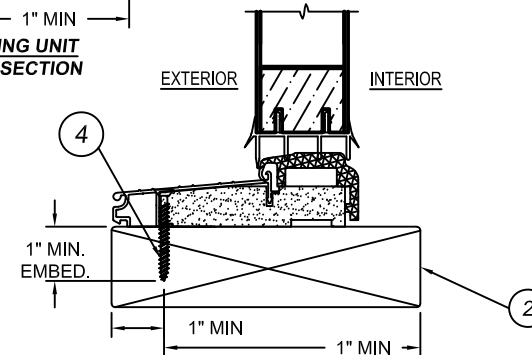


**FIXED UNIT  
HORIZONTAL CROSS SECTION  
INSWING SHOWN**

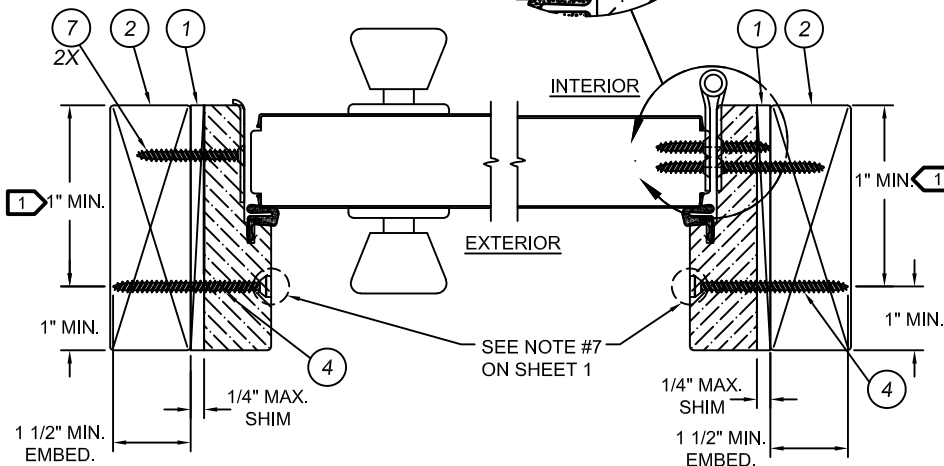
**HINGE DETAIL:**  
TOP = 6 SCREWS (ITEM #8), 2 SCREWS (ITEM #6)  
CENTER TOP = 8 SCREWS (ITEM #8)  
CENTER BOTTOM = 8 SCREWS (ITEM #8)  
BOTTOM = 8 SCREWS (ITEM #8)



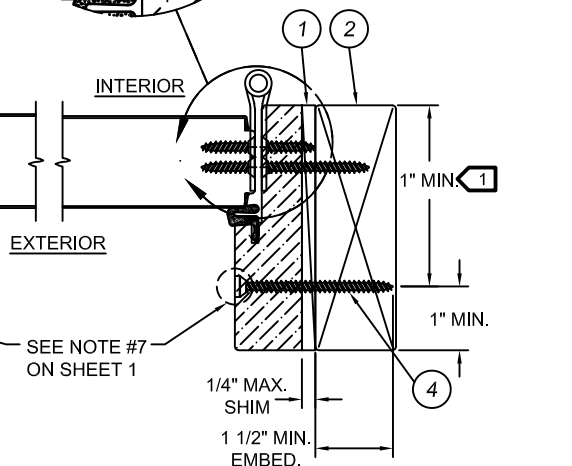
**INSWING OPERATING UNIT  
VERTICAL CROSS SECTION  
ADA SILL**



**INSWING OPERATING UNIT  
VERTICAL CROSS SECTION  
XO, OXO CONFIG ONLY**



**INSWING LATCH JAMB AT FRAME  
HORIZONTAL CROSS SECTION**



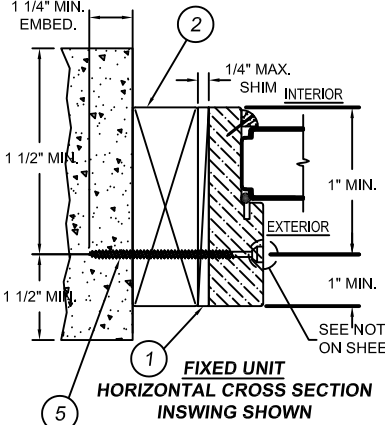
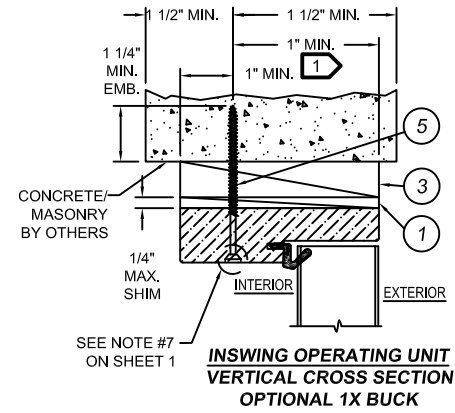
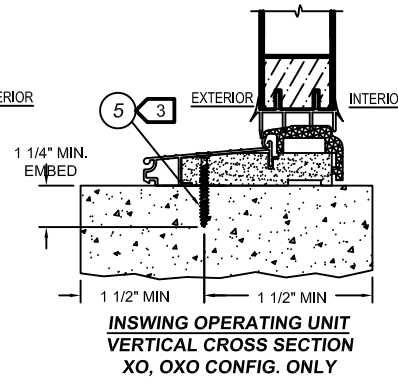
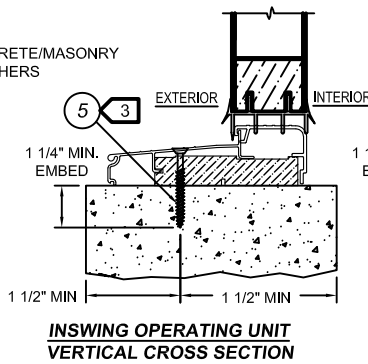
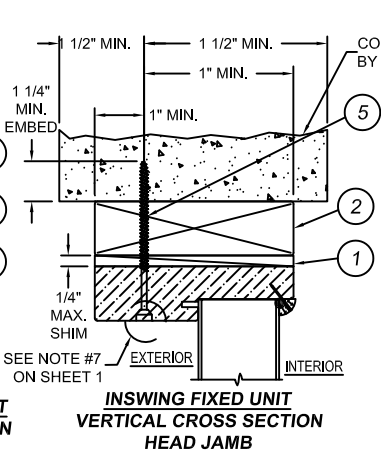
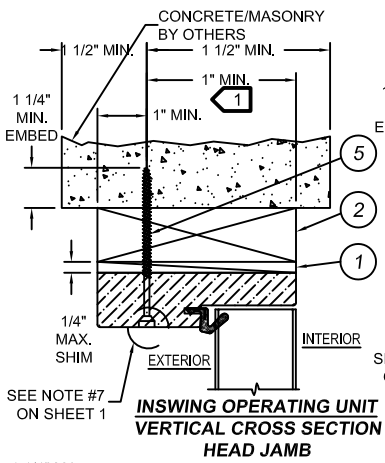
**INSWING HINGE JAMB AT FRAME  
HORIZONTAL CROSS SECTION**

**NOTES:**

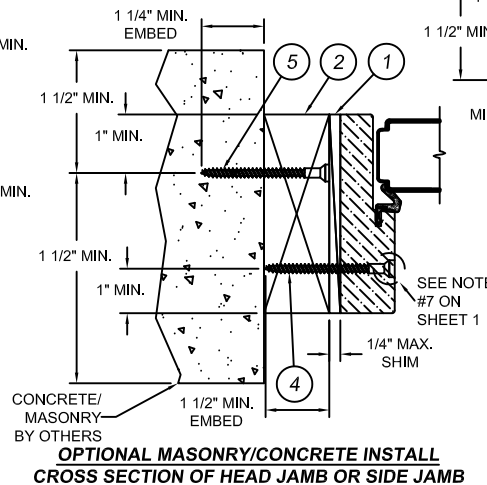
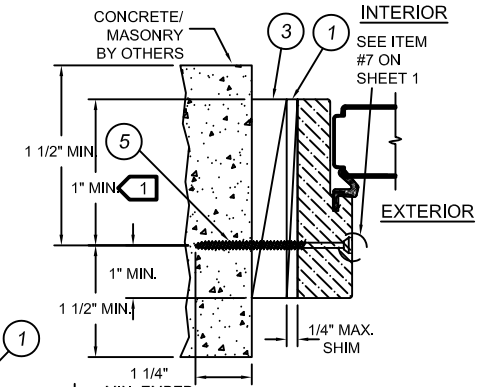
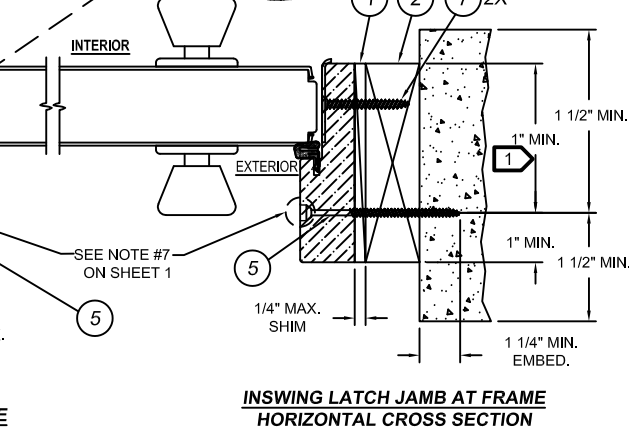
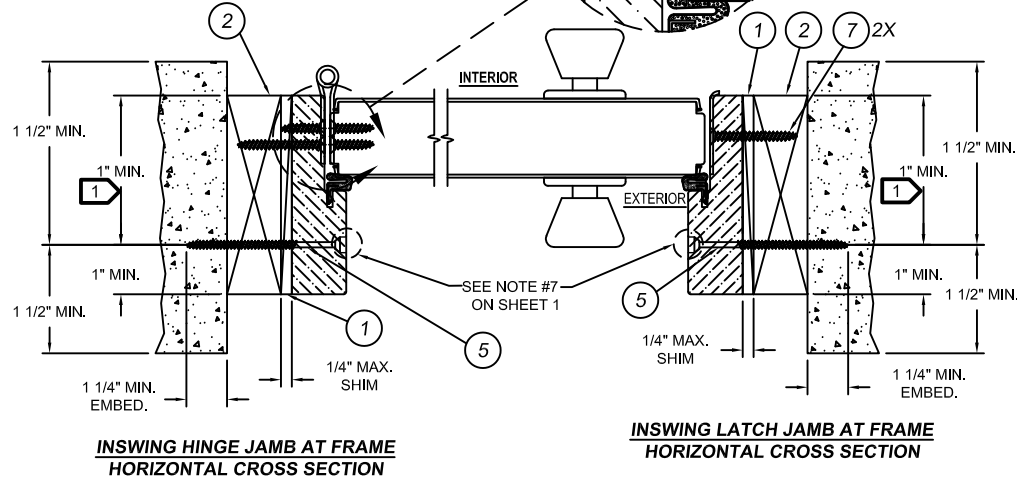
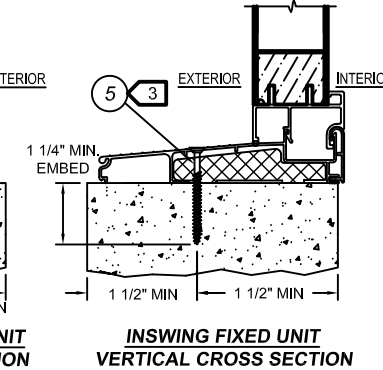
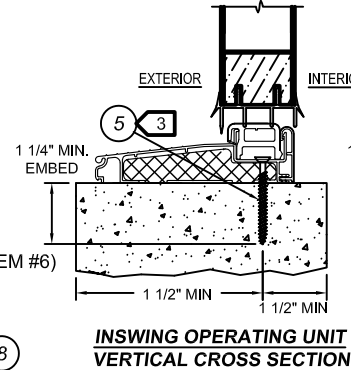
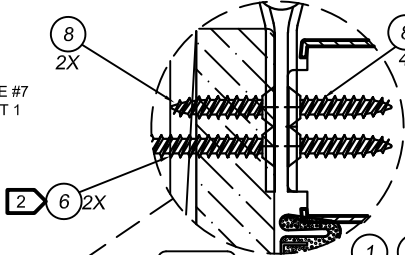
- 1 OPTIONALLY, ANCHOR CAN BE PLACED IN NARROW SECTION OF HEAD OR JAMB AS LONG AS MINIMUM EMBEDMENT AND EDGE DISTANCE ARE ACHIEVED.
- 2 ITEM #6, (#9 X 2 1/2") TWO SCREWS TO BE INSTALLED IN TOP HINGE AT JOB SITE, CLOSEST TO WEATHERSTRIP.
- 3 AT SILL, PLACE ANCHOR IN SILL BASE MATERIAL FOR MAXIMUM SUPPORT.



<b>JELD-BOWEN WINDOWS &amp; DOORS</b>	
3737 Lakeport Blvd. Klamath Falls, OR 97601 Phone: (541) 882-3451 Fax: (541) 850-2609	
STEEL WOOD EDGE 12-0 X 8-0 FULL LITE INSWING/OUTSWING IMPACT GLAZING	PART OR ASSEMBLY INSWING VERTICAL AND HORIZONTAL SECTIONS IN WOOD
DATE: 12.15.2015	
SCALE: NONE	
DWN. BY: G.LUBBECKE	
CHK. BY: S.SAFFELL	
DRAWING NO.: D013701	
SHEET 6 OF 9	



**HINGE DETAIL:**  
 TOP = 6 SCREWS (ITEM #8), 2 SCREWS (ITEM #6)  
 CENTER = 8 SCREWS (ITEM #8)  
 BOTTOM = 8 SCREWS (ITEM #8)



- NOTES:**
- 1 OPTIONALLY, ANCHOR CAN BE PLACED IN NARROW SECTION OF HEAD OR JAMB AS LONG AS MINIMUM EMBEDMENT AND EDGE DISTANCE ARE ACHIEVED.
  - 2 ITEM #6, (#9 X 2 1/2") TWO SCREWS TO BE INSTALLED IN TOP HINGE AT JOB SITE, CLOSEST TO WEATHERSTRIP.
  - 3 AT SILL, PLACE ANCHOR IN SILL BASE MATERIAL FOR MAXIMUM SUPPORT.

**HERMES R. INORERO**  
 LICENSE NO. 73778  
 STATE OF FLORIDA  
 PROFESSIONAL ENGINEER

**HERMES R. INORERO**  
 FLORIDA P.E. NO. 73778  
 398 E. DANIA BEACH BLVD, #338  
 DANIA BEACH, FL 33004  
 FBPE CERT. OF AUTH. NO. 29578

**JELD-WEN**  
 WINDOWS & DOORS

3737 Lakeport Blvd.  
 Klamath Falls, OR 97601  
 Phone: (541) 882-3451  
 Fax: (541) 850-2609

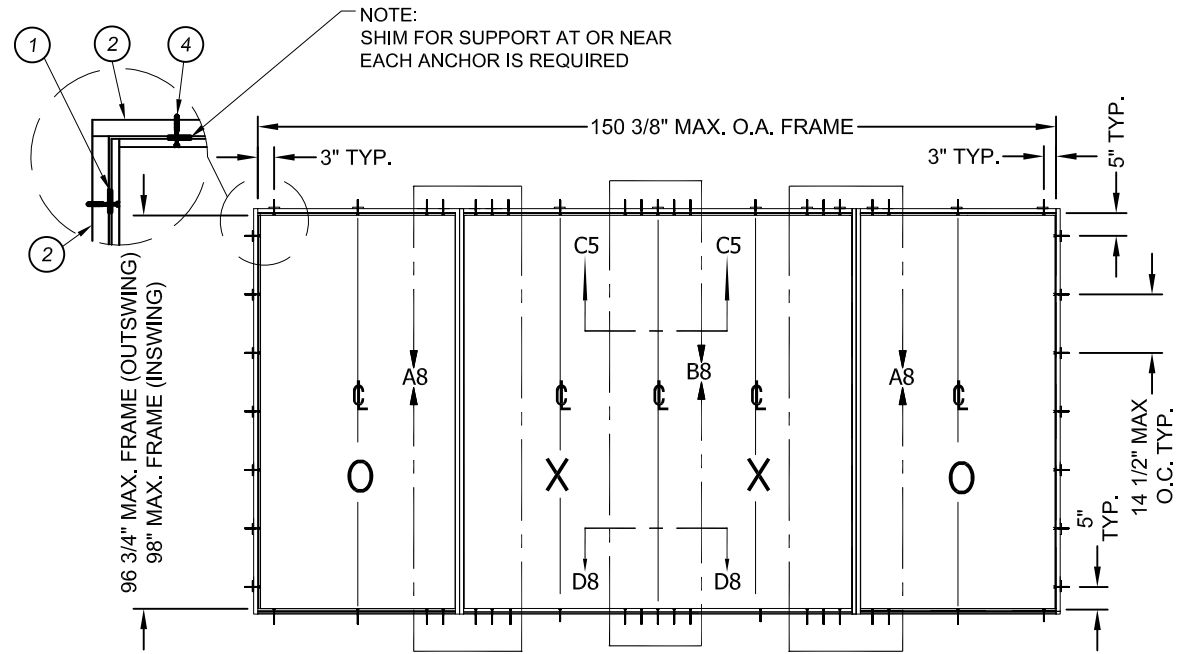
FIBERGLASS 12-0 X 6-8 FULL LITE OPER.  
 WITH NON-IMPACT FULL SIDELITES

PART OR ASSEMBLY

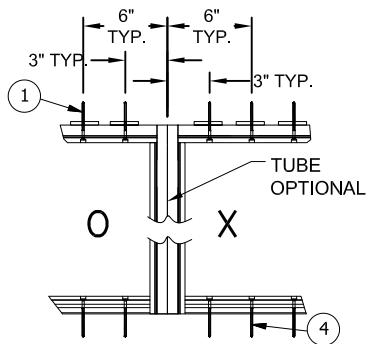
INSWING VERTICAL AND HORIZONTAL SECTIONS  
 IN MASONRY/CONCRETE

DATE: 12.15.2015  
 SCALE: NONE  
 DWG. BY: G.LUBBECKE  
 CHK. BY: S.SAFFELL  
 DRAWING No.: D013701  
 SHEET 7 OF 9

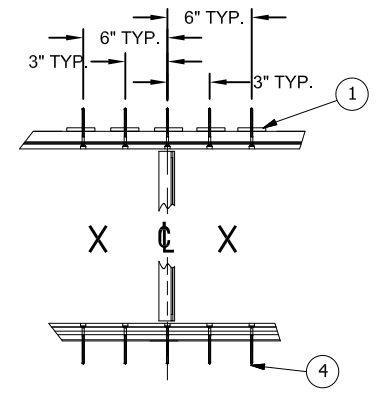
NOTE:  
SHIM FOR SUPPORT AT OR NEAR  
EACH ANCHOR IS REQUIRED



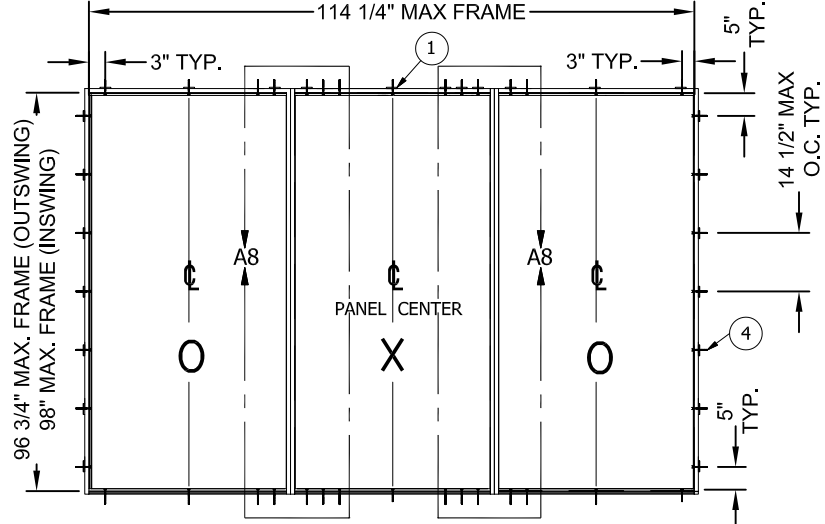
**12-0 X 8-0 OUTSWING/INSWING**  
ANCHOR LOCATIONS  
(FROM EDGE OF FRAME)



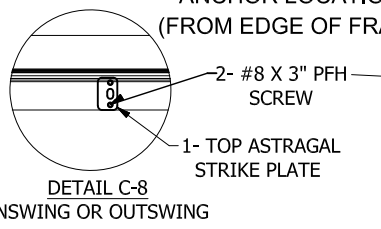
**DETAIL A8**  
(8) ANCHOR LOCATIONS AT MULL



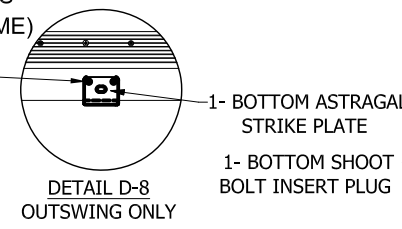
**DETAIL B8**  
(10) ANCHOR LOCATIONS AT ASTRAGAL



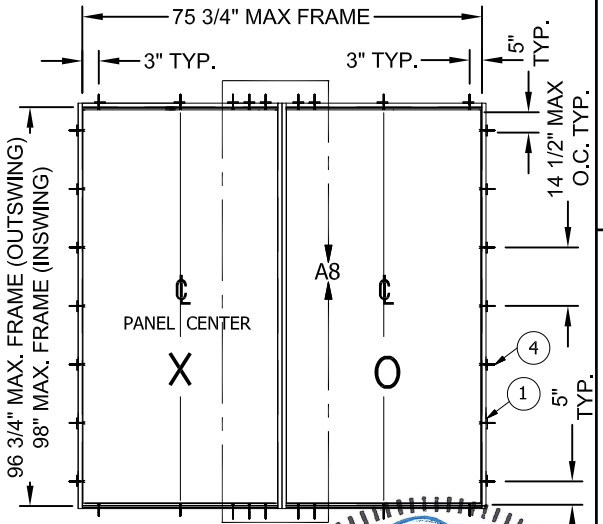
**9-0 X 8-0 OUTSWING/INSWING**  
ANCHOR LOCATIONS  
(FROM EDGE OF FRAME)



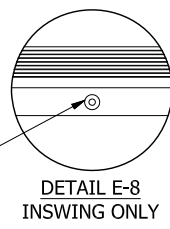
**DETAIL C-8**  
INSWING OR OUTSWING



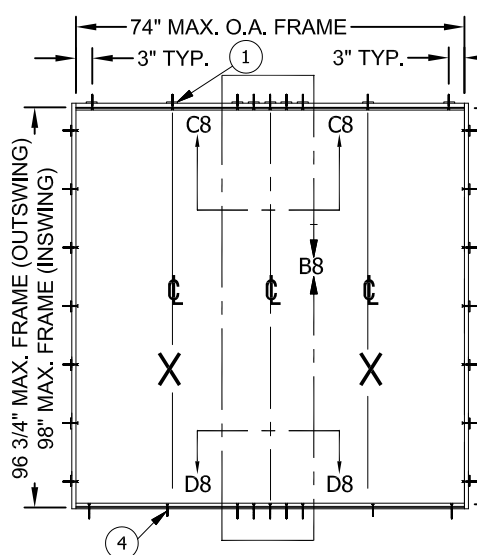
**DETAIL D-8**  
OUTSWING ONLY



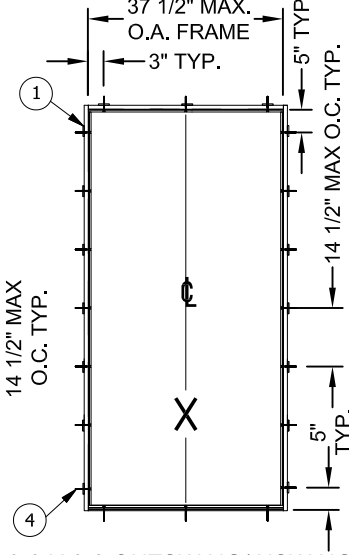
**6-0 X 8-0 OUTSWING/INSWING**  
ANCHOR LOCATIONS  
(FROM EDGE OF FRAME)



**DETAIL E-8**  
INSWING ONLY



**6-0 X 8-0 OUTSWING/INSWING**  
ANCHOR LOCATIONS  
(FROM EDGE OF FRAME)



**3-0 X 8-0 OUTSWING/INSWING**  
ANCHOR LOCATIONS  
(FROM EDGE OF FRAME)

**HERMES R. NORERO**  
PROFESSIONAL ENGINEER  
No. 73778  
STATE OF FLORIDA  
395 E. DANIA BEACH BLVD, #338  
DANIA BEACH, FL 33004  
FBPE CERT. OF AUTH. NO. 29578

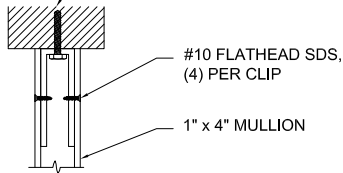
**JELLOWEN**  
WINDOWS & DOORS  
3737 Lakeport Blvd.  
Klamath Falls, OR 97601  
Phone: (541) 882-3451  
Fax: (541) 850-2609

STEEL WOOD EDGE 12-0 X 8-0 FULL LITE  
INSWING/OUTSWING IMPACT GLAZING  
PART OR ASSEMBLY  
INSWING AND OUTSWING ANCHORING DETAILS

DATE: 12.15.2015  
SCALE: NONE  
DWG. BY: G.LUBBECKE  
CHK. BY: S.SAFFELL  
DRAWING No.: D013701  
SHEET 8 OF 9

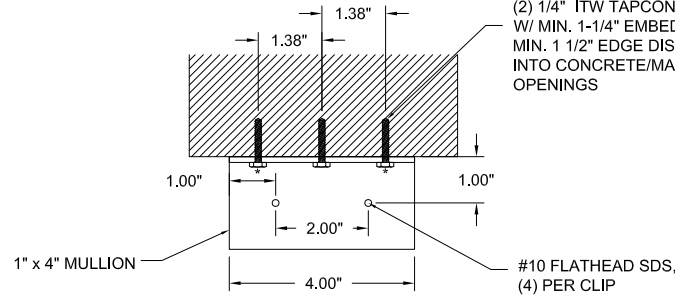


(3) #10 WOOD SCREWS  
W/ MIN. 1-1/2" EMBEDMENT,  
MIN. 3/4" EDGE DISTANCE INTO  
WOOD OPENINGS  
(2) 1/4" ITW TAPCONS  
W/ MIN. 1-1/4" EMBEDMENT,  
MIN. 1 1/2" EDGE DISTANCE,  
INTO CONCRETE/MASONRY  
OPENINGS

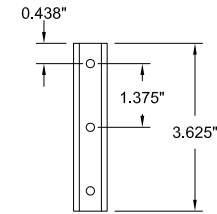
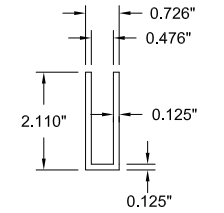


DETAIL A-9  
TYPICAL ATTACHMENT AT  
MULLION INTERSECTION W/C-CLIP  
VERTICAL SECTION

(3) #10 WOOD SCREWS  
W/ MIN. 1-1/2" EMBEDMENT,  
MIN. 3/4" EDGE DISTANCE INTO  
WOOD OPENINGS  
(2) 1/4" ITW TAPCONS  
W/ MIN. 1-1/4" EMBEDMENT,  
MIN. 1 1/2" EDGE DISTANCE,  
INTO CONCRETE/MASONRY  
OPENINGS

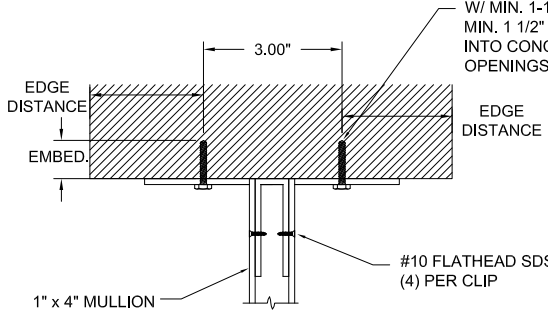


DETAIL B-9  
1" X 4" MULLION ATTACHMENT AT  
MULLION INTERSECTION W/C-CLIP  
SIDE ELEVATION



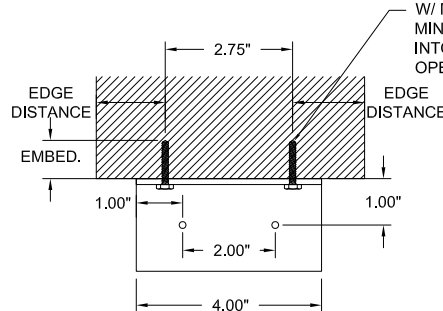
DETAIL C-9  
C-CLIP

(4) #10 WOOD SCREWS  
W/ MIN. 1-1/2" EMBEDMENT,  
MIN. 3/4" EDGE DISTANCE INTO  
WOOD OPENINGS  
(4) 1/4" ITW TAPCONS  
W/ MIN. 1-1/4" EMBEDMENT,  
MIN. 1 1/2" EDGE DISTANCE,  
INTO CONCRETE/MASONRY  
OPENINGS

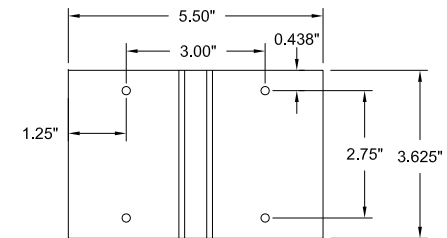
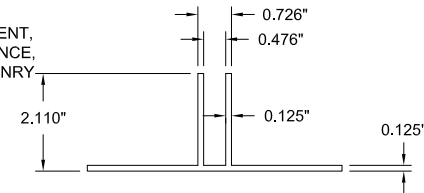


DETAIL D-9  
TYPICAL ATTACHMENT  
WITH T-CLIP  
VERTICAL SECTION

(4) #10 WOOD SCREWS  
W/ MIN. 1-1/2" EMBEDMENT,  
MIN. 3/4" EDGE DISTANCE INTO  
WOOD OPENINGS  
(4) 1/4" ITW TAPCONS  
W/ MIN. 1-1/4" EMBEDMENT,  
MIN. 1 1/2" EDGE DISTANCE,  
INTO CONCRETE/MASONRY  
OPENINGS



DETAIL E-9  
1" X 4" MULLION ATTACHMENT  
WITH T-CLIP  
SIDE ELEVATION



DETAIL 9  
T-CLIP

**JELD-WEN**  
WINDOWS & DOORS  
3737 Lakeport Blvd.  
Klamath Falls, OR 97601  
Phone: (541) 882-3451  
Fax: (541) 850-2609

STEEL WOOD EDGE 12-0 X 8-0 FULL LITE  
INSWING/OUTSWING IMPACT GLAZING

PART OR ASSEMBLY  
TUBE MULLION ANCHORING DETAILS

DATE: 12.15.2015  
SCALE: NONE  
DWG. BY: G.LUBBECKE  
CHK. BY: S.SAFFELL  
DRAWING No.: D013701  
SHEET 9 OF 9

HERMES F. NOBRO  
LICENSE No. 73778  
STATE OF FLORIDA  
PROFESSIONAL ENGINEER  
HERMES F. NOBRO  
FLORIDA P.E. NO. 73778  
398 E. DANIA BEACH BLVD., #338  
DANIA BEACH, FL 33004  
FBPE CERT. OF AUTH. NO. 29578